

MUNICIPAL WASTE RURAL TRANSFER FACILITY (RTF)

Community centers, libraries, nature parks, playgrounds and ballfields are considered public assets, providing opportunities for residents to recreate and convene. In small, rural communities Rural Transfer Facilities are also public assets providing residents with ways to properly dispose of their household trash and recycling ensuring local communities remain clean and beautiful.

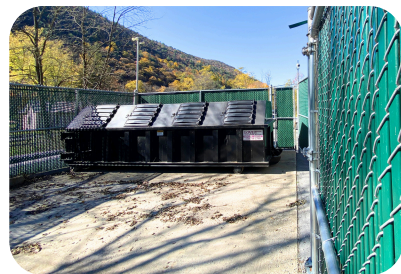
PA Department of Environmental Protection (DEP) Permit-by-Rule (PBR)

In October 2022, DEP created a PBR ([PA Bulletin - https://www.keppabeautiful.org/wp-content/uploads/2024/09/01_rtf-pbr_final_eqb_7.12.2022.pdf](https://www.keppabeautiful.org/wp-content/uploads/2024/09/01_rtf-pbr_final_eqb_7.12.2022.pdf)), to authorize the construction and operation of permitted streamlined and flexible municipal waste transfer facilities in rural areas, defined as less than 300 people per square mile, where trash collection and recycling services are not convenient and affordable which:

- Allows persons or municipalities more flexibility to obtain the necessary authorization to operate an RTF with lower permitting costs while still providing the necessary and adequate environmental controls.
- Authorizes the collection of municipal, construction & demolition (C&D), and yard wastes.
- Requires the collection of recyclables, at a minimum, corrugated cardboard, and aluminum, steel, and bimetallic cans.
- Prohibits collection and disposal of liquids, special handling, residual or hazardous wastes.

For more information and assistance

- Contact Keep Pennsylvania Beautiful (KPB) to discuss technical assistance on start-up, partnering with neighboring entities, suitable site locations, and possible funding sources, at info@keppabeautiful.org or 724.836.4121.
- Review detailed [rules and regulations](https://www.keppabeautiful.org/wp-content/uploads/2024/09/PA-Bull-excerpt-52-44.pdf) (<https://www.keppabeautiful.org/wp-content/uploads/2024/09/PA-Bull-excerpt-52-44.pdf>).



Examples of Rural Transfer Facilities: Spring Township, Snyder County; Pine Township, Tioga County and McHenry Township, Elk County.

About KPB: KPB's mission is empowering Pennsylvanians to keep our communities clean and beautiful. KPB's core programming focuses on litter and illegal dump prevention, cleanup, community greening, and proper waste handling and sustainable practices. KPB works with many partnering organizations on the state and grassroots level to accomplish our goal of a clean and beautiful Pennsylvania and is the state affiliate of Keep America Beautiful, Inc., the nation's largest volunteer-based community action and education organization. To learn more, visit [keppabeautiful.org](https://www.keppabeautiful.org).